

**Document title:** Community Health, Safety and Security Management Plan

**Document number:** 1062-TGN-MNG-PLN-PJM-22-00011

**Project:** THE DEVELOPMENT OF THE ROMANIAN GAS TRANSMISSION SYSTEM  
ALONG BULGARIA-ROMANIA-HUNGARY-AUSTRIA  
ROUTE, PODISOR – GMS HORIA AND 3 NEW COMPRESSOR STATIONS  
(JUPA, BIBESTI AND PODISOR) (REFERENCE NUMBER IN EU LIST: 6.24.2)

Revision	Date	Issued by	Checked by	Approved by
Rev 2		Luminita Fatu Expert PMU BRUA  Sabina Sotropa Legal advisor PMU BRUA	Iulian Butnaru BRUA HSE Project manager  Sorin Keszeg Project Manager Management Services PMU BRUA	Ion Sterian Director General SNTGN Transgaz SA

**Disclaimer:** The sole responsibility for this publication lies with the author. The European Union and the Innovation & Networks Executive Agency (I.N.E.A) are not responsible for any use that may be made of the information contained herein.

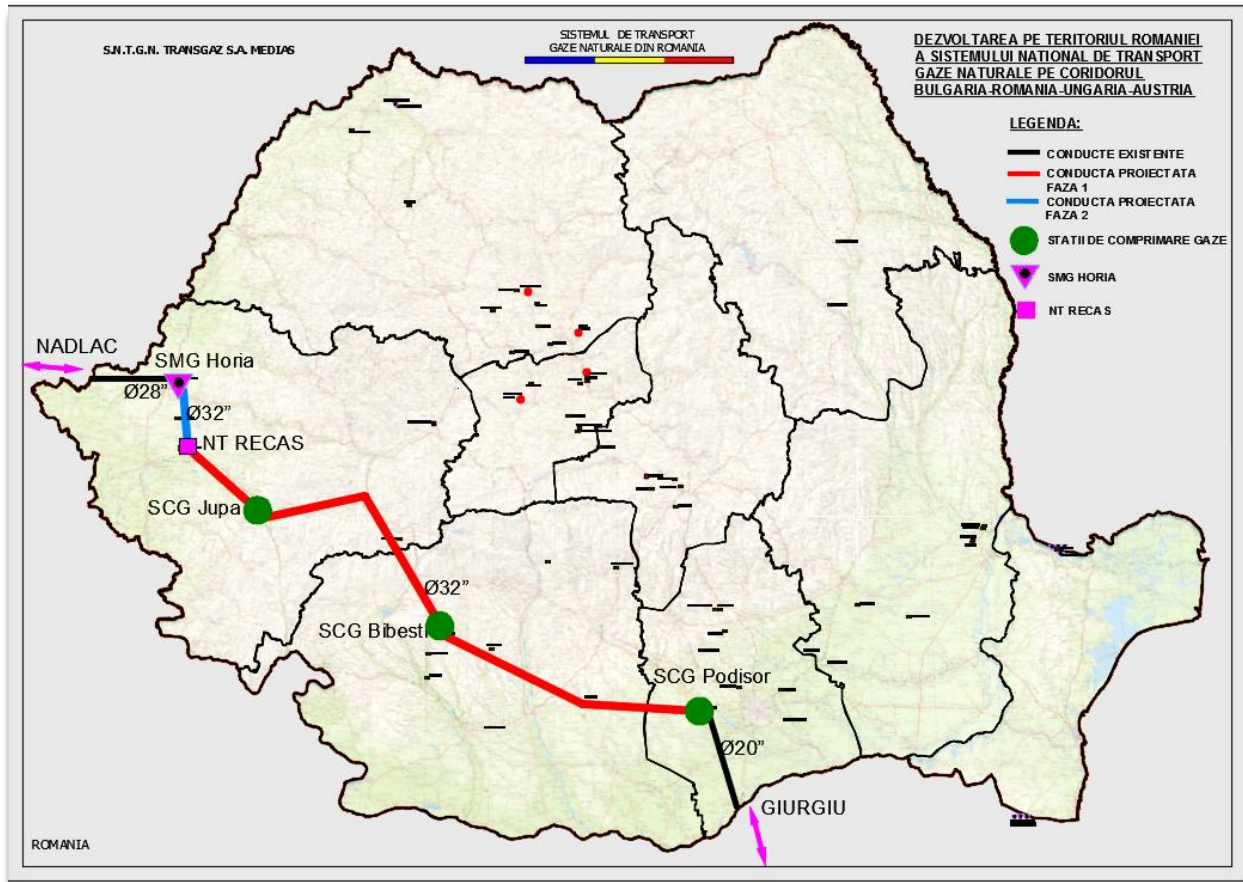
## Contents

1. INTRODUCTION .....	3
1.1 PROJECT OVERVIEW.....	3
1.2 ENVIRONMENTAL AND SOCIAL COMMITMENTS .....	4
1.3 DOCUMENT MANAGEMENT .....	4
2. PURPOSE AND SCOPE .....	4
2.1 Purpose .....	4
2.2 Scope.....	5
3. KEY POLICIES, LEGISLATION, NORMS AND STANDARDS.....	5
4. LINKAGE TO OTHER BENEFICIARY ELEMENTS.....	7
5. ROLES AND RESPONSIBILITIES .....	9
6. MANAGEMENT, MITIGATION, VERIFICATION AND MONITORING .....	10
<b>6.1 Envisaged measures to protect the local community during Project execution stage .....</b>	<b>13</b>
7. APPENDIX 1: Mitigation Measures & Management Actions .....	16
8. APPENDIX 2: EU AND ROMANIAN LEGISLATION.....	18

## 1. INTRODUCTION

### 1.1 PROJECT OVERVIEW

SNTGN Transgaz SA Medias (“Transgaz”, “the Company” or “the Beneficiary”), the licensed operator of the Romanian National Gas Transmission System, is developing a 529 km natural gas pipeline between Podisor in southern Romania and Horia in the west of the country (the “Project”). The pipeline, which for much of the route will be buried and will upgrade or run alongside existing pipelines, represents the Romanian section of the Bulgaria-Romania-Hungary-Austria Natural Gas Transmission Corridor. In addition to the pipeline itself, the Project will also require construction of three new Gas Compressor Stations (GCS) at Podisor, Bibesti and Jupa, as well as a range of supporting infrastructure including block valve stations, construction camps, pipe storage areas, watercourses and infrastructure crossings and access roads.



Whilst the majority of the route is on land currently used for farming, it does pass through a number of specifically sensitive areas, including seven Natura 2000 Sites, and the nationally important Dinosaurs Geo-Park. It also passes close to a number of sites of archaeological value including the ancient city of Tibiscum

near Jupa. In some of these areas, as well as near major roads and railways and for the 8 major rivers, this will involve the use of horizontal directional drilling. In other areas in the mountains special “hammering techniques” may also be applied.

## 1.2 ENVIRONMENTAL AND SOCIAL COMMITMENTS

The Project is subject to various environmental and social requirements that are managed by the Company through the implementation of its Health, Safety and Environmental Management System (HSE-MS)<sup>[1]</sup>. This HSE-MS includes a specific Project Framework Construction Environmental and Social Management Plan (F-CESMP) as well as associated topic/activity specific Construction Environmental and Social Management Plan (CESMPs). Operational phase ESMPs will be developed at a later stage prior to BRUA operation. The overall approach to integration of the above documents is described in the F-CESMP document itself.

## 1.3 DOCUMENT MANAGEMENT

This document is the Community Health, Safety and Security Management Plan – 1062-TGN-MNG-PLN-PJM-22-00011.

This document will be managed and controlled by the Document Control and Archiving Compartment within BRUA Project Management Unit. The methods for document management and improvement during the construction phase will be described in the Document Guide to be developed by BRUA PMU.

The Beneficiary and the Contractors will establish contact point units to monitor actions, events and to correct the errors at site level. All the proposed solutions will be reported to BRUA PMU, Management of Change unit. This structure is responsible for decisions, under Project manager- management services approval, for drawing procedures able to be applied on all sites or on specific sites, and for updating the CHSMP documents.

## 2. PURPOSE AND SCOPE

### 2.1 Purpose

This Management Plan covers all activities related to the implementation of the Project, including contractors (and subcontractor) activities. It outlines Transgaz’ commitment and approach to avoid and reduce community health, safety and security risks that may arise as the result of the project.

The requirements set up in this Management Plan represents Contractor’s obligations. The Contractor(s) are required to develop and implement their own CHSMP using this Management Plan as a guide.

---

<sup>[1]</sup> Integrated Management Manual Quality-Environment-Occupational Health and Safety, code MSMI-CMSSO Ed. 03/Rev.

The purpose of this Community Health, Safety and Security Management Plan is to:

- Define the scope of this Management Plan;
- Define the roles and responsibilities;
- Outline the applicable legislation, regulations and standards;
- Define project commitments and guidance to this Management Plan.

## 2.2 Scope

The scope of this Community Health, Safety and Security Management Plan is to:

- Identify the potential negative impact of the Project at the level of the communities along the route;
- Develop specific and achievable mitigation measures to avoid or reduce any negative impact on the communities along the route;
- Develop the necessary tools and procedures for the management, monitoring and verification of the impacts on local communities
- Set Key Performance Indicators

## 3. KEY POLICIES, LEGISLATION, NORMS AND STANDARDS

Transgaz and all contractors (and sub-contractors) are required to comply with all relevant national legislation and regulatory requirements related to health, safety and security. Whilst contractors are required to verify the latest regulatory requirements themselves an indicative list of Romanian national legislation is provided in Appendix 3 to this.

Contractors must also ensure that relevant requirements of the various construction-related permits for the Project issued by national (and local) regulators are addressed. Any requirements arising from the revision/amendment of those permits will also be applied. Key permits are summarised in the F-CESMP Framework Document.

This Management Plan must be observed in parallel with the following relevant Policies, legal requirements and standards:

- Transgaz policies on environment and social responsibility;
- Environmental Agreement for the BRUA Project;
- European and national legislation regarding waste management. See the indicative list below:
  - G.D 856/2002 (Government Decisions) on waste management record keeping and the list of waste approval;
  - Decree no. 1281 /1121/2005 on establishing the rules for identifying containers for different types of materials for the purposes of selective collection;
  - G.D 349/2005 (Government Decisions) on waste storage, as amended and supplemented; (Transposes Directive 1999/31/EC on the landfill of waste, published in the Official Journal of European Community (JOUE) no. L 182 of July 16th, 1999;

- G.D 349/2005 (Government Decisions) on waste storage, as amended and supplemented; (Transposes Directive 1999/31/EC on the landfill of waste, published in the Official Journal of European Community (JOUE) no. L 182 of July 16th, 1999);
- G.D 235/2007 (Government Decision) on used oils management transposes Directive 75/439/CEE on disposal of waste oils, published in the Official Journal of European Community (JOCE) no. L 194/1975, amended by Directive 87/101/CEE, published in the Official Journal of European Community (JOCE) no. L 42/1987, on disposal of waste oils.
- G.D 1061/2008 (Government Decisions) on the transportation of hazardous and non-hazardous waste across Romanian territory;
- Law no. 211/15.11.2011 on waste conditions, republished in 2014, with further amendments and supplements (transposes Directive 2008/98/CE of the European Parliament and Council of November 19th, 2008 on waste and repealing certain directives, published in the Official Journal of UE (JOUE) series L no. 312 of November 22, 2008);
- Law no. 249/2015 on packaging and packaging waste management; (transposes the provisions of Directive 94/62/CE of the European Parliament and Council of December 20, 1994 on packaging and packaging waste, published in the Official Journal of European Community series L, no. 365 of December 31, 1994, amended by Directive 2004/12/CE of the European Parliament and Council of February 11, 2004, published in the Official Journal of UE, series L, no. 47 of February 18, 2004, by Directive 2013/2/UE of the European Commission, of February 7, 2013 on the amendment of Annex I to Directive 94/62/CE of the European Parliament and Council of on packaging and packaging waste, published in the Official Journal of UE series L, no. 37 of February 8, 2013, Decision 97/129/CE of the European Commission of January 28, 1997 establishing the identification system for packaging materials pursuant to European Parliament and Council Directive 94/62/CE on packaging and packaging waste, published in the Official Journal of European Community series L, no. 50 of February 20, 1997, Commission Decision 2005/270/CE of March 22, 2005 establishing the formats relating to the database system pursuant to Directive 94/62/EC on packaging and packaging waste [notified under number C (2005) 854, published in the Official Journal of UE series L, no. 86 of April 5, 2005);
- G.D 1168/2013 amending and supplementing G.D. 788/2007 on establishing the measures for the implementation of European Parliament's and of the Council's (EC) Regulation no. 1013 / 2006 on shipments of waste;
- European and national legislation regarding hazardous materials. See the indicative list below:
  - Law 360 of September 2<sup>nd</sup>, 2003 (\*republished\*) on the regime of hazardous chemical substances and preparations, as further amended and supplemented;
  - Regulation (EC) No 1272/2008 of the European Parliament and of the Council of 16 December 2008 on classification, labelling and packaging of substances and mixtures, amending and repealing Directives 67/548/EEC and 1999/45/EC, and amending Regulation (EC) No. 1907/2006;
  - Regulation (EC) No 1907/2006 of the European Parliament and of the Council of 18 December 2006 concerning the Registration, Evaluation, Authorization and Restriction of Chemicals

- (REACH), establishing a European Chemicals Agency, amending Directive 1999/45/EC and repealing Council Regulation (EEC) No. 793/93 and Commission Regulation (EC) No. 1488/94 as well as Council Directive 76/769/EEC and Commission Directives 91/155/EEC, 93/67/EEC, 93/105/EC and 2000/21/EC;
- National legislation on transportation. See the indicative list below:
    - Government Emergency Ordinance no. 195/2005 on environmental protection- published in O.J. no. 1196/30 Dec. 2005 with further amendments and supplements;
    - Order no. 394/2008 of the Ministry of Transportation for the amendment and supplementation of the Norms regarding the organization and conduct of road transportation and related activities, approved by Order no. 1892/2006 of the Ministry of Transportation, Construction and Tourism - O.J. no. 262/3.04.2008;
    - Law no. 167/2003 for the approval of the Government Ordinance no. 81/2000 on the certification of the classification of the registered road vehicles into the technical norms on road traffic safety, environmental protection and use according to destination, by regular technical inspections - O.J. 291/2003;
    - Law no. 333/2007 for the amendment and supplementation of Law no. 31/1994 for the accession of Romania to the European Agreement regarding the international carriage of dangerous goods by road (A.D.R.), signed in Genoa 30.09.1957 – O.J. 37/17.01.2008.
  - Reports issued by Romanian National Institute of Statistics;
  - Official websites and reports prepared by different ministries (Ministry of Housing, Ministry of Labour, Family and Social Protection);
  - Applicable international standards and guides:
    - EBRD Performance Requirement 2: “Labour and Working Conditions” which reflects a set a standard of practice and behaviour for the security personnel, guided by the principle of proportionality good international practice;
    - EBRD Performance Requirement 4: “Health and Safety” which deals with risk assessment, mitigation and management related to community health, safety and security.

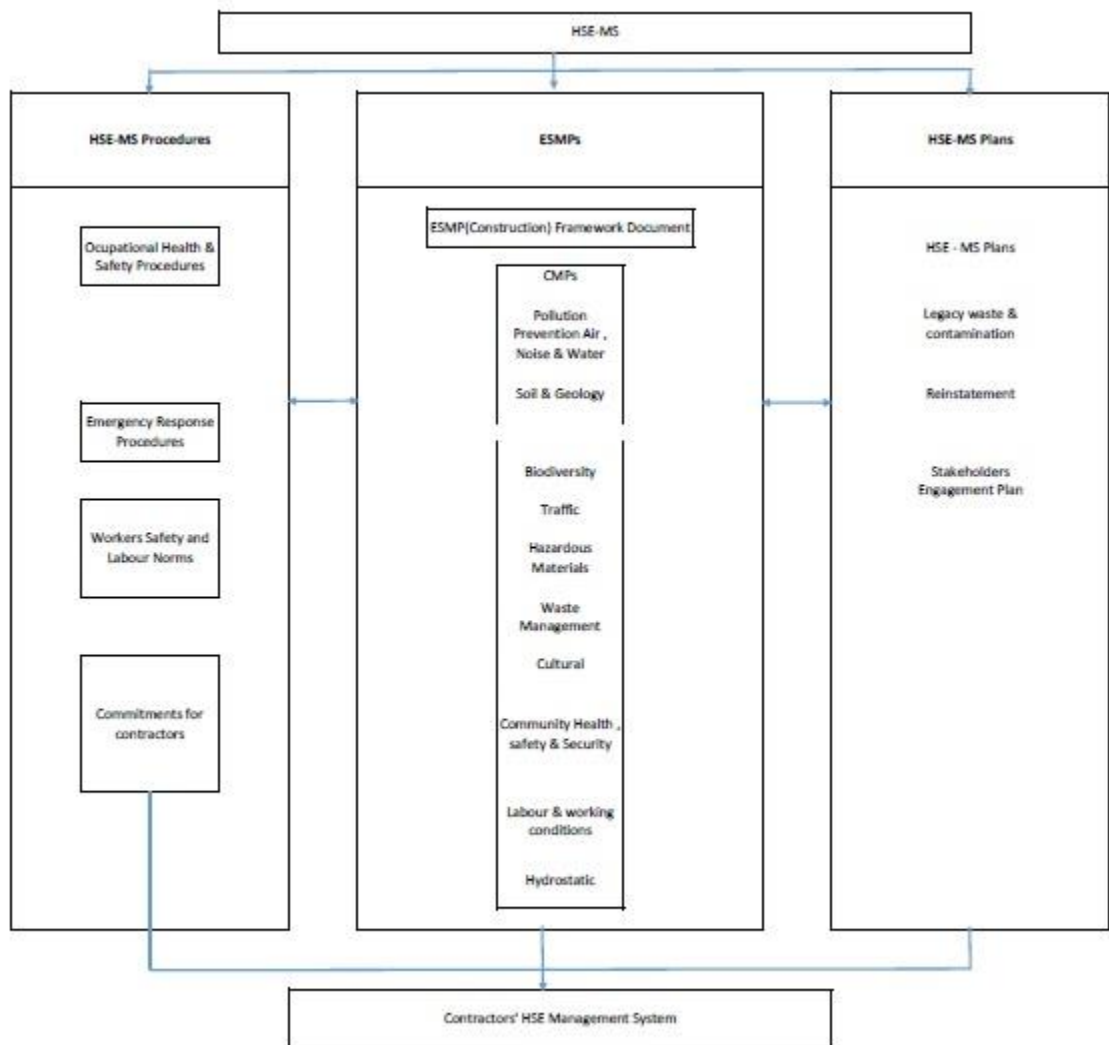
#### 4. LINKAGE TO OTHER BENEFICIARY ELEMENTS

This Management Plan is part of the overall suite of Management Plans developed for the Project and involves connections and cross-references to a number of other Management Plans that have community health, safety and security implications, namely:

- Contractor Management Plan 1062-TGN-MNG-PLN-PJM-22-00002;
- Hazardous Materials Management Plan 1062-TGN-MNG-PLN-PJM-22-00004;
- Health, Safety and Security Management Plan – 1062-TGN-MNG-PLN-PJM-22-00009;
- Pollution Prevention Management Plan 1062-TGN-MNG-PLN-PJM-22-00003;

- Emergency Response Management Plan (in particular the response to off-site accidents and incidents) 1062-TGN-MNG-PLN-PJM-22-00015;
- Road and Traffic Management Plan, (in particular the management of impacts using the new access roads and public roads) 1062-TGN-MNG-PLN-PJM-22-00012;
- Water Management Plan, (especially as regards to the protection of water protection) 1062-TGN-MNG-PLN-PJM-22-00007;
- Labour and Working Conditions Management Plan, (especially in terms of workers training and information) 1062-TGN-MNG-PLN-PJM-22-00010;
- Stakeholders Engagement Plan, (especially in terms of communication with stakeholders and local communities) 1062-TGN-MNG-PLN-PJM-22-00016.

The structure and the inter-dependency of the various Management Plans is shown in the table below:





## 5. ROLES AND RESPONSIBILITIES

Operational procedures of cooperation on site will be established in the Work Statement, a document that will be Appendix to the Contract between Transgaz and the Contractor. Contact Point Unit from each site, as defined in the Contractors' Management Plan, is the responsible structure for implementing and monitoring the operational provisions in the Work Statement.

Key roles and responsibilities for implementing the Management Plan.

Roles	Responsibilities
Director General SNTGN TRANSGAZ SA	<ul style="list-style-type: none"> <li>- Approves the Community Health and Safty Management Plan</li> </ul>
BRUA – Head of Stakeholdes Management and communication department	<ul style="list-style-type: none"> <li>- Ensures compliance with the requirements set out in the Project Plan;</li> <li>- Coordinates the Community Liasson Officers within BRUA PMU</li> <li>- Has overall responsibility for implementation of the Plan, including the Contractors;</li> <li>- Monitors and reviews the plan, according to the changes in legislation or other emerging requirements;</li> <li>- Provides the necessary support to contractors for them to comply with Communities Health, Safety and Security Management Plan;</li> <li>- Ensures that the plan is available to all BRUA PMU employees and contractors;</li> <li>- Performs regular inspections to contractors to monitor compliance with the requirements of this Plan.</li> </ul>

Roles	Responsibilities
Contractor/Subcontractor Community Liasson Officers	<ul style="list-style-type: none"> <li>- Ensures that all activities are carried out in accordance with the requirements of this Management Plan;</li> <li>- Performs routine inspection on work sites to ensure that all activities are carried out in accordance with the Community Health, Safety and Security Management Plan;</li> <li>- Concludes contracts with authorized companies for the collection, recovery and disposal of all categories of waste;</li> </ul>

	<ul style="list-style-type: none"> <li>- Provides transportation of waste by authorized companies in accordance with the legal provisions;</li> <li>- Ensures that subcontractors' activities are conducted in accordance with the requirements of this Management Plan;</li> <li>- Prepares a monthly report of the environment that includes details on ways to prevent or minimize adverse effects that may arise during BRUA Project execution;</li> <li>- Reports on all hazards, incidents and nonconformities occurred during execution.</li> </ul>
--	--

## 6. MANAGEMENT, MITIGATION, VERIFICATION AND MONITORING

Transgaz has elaborated a Contractors' Management Plan outlining the relationship between the company, represented by BRUA PMU and the contractors for the construction of the pipeline and AGIs.

The Contractors' Management Plan also regulates aspects such as work effort integration, interfaces between BRUA PMU and Contractors, interfaces among subcontractors, management of labour, management of OHS, workers' registration and record keeping, management of worker grievances, worker communication, facilities and worker accommodation, management and support of sub-contractors, progress reporting, review and acceptance process.

While developing the Management Plans a large number of potential risks have been identified and specific mitigation and monitoring measures have been foreseen and addressed in these Plans.

A Rapid Social Impact Assessment Report was developed for the Project which includes a socio-economic baseline along the Project route. Also, a public health baseline is included in the above mentioned Report.

Potential impacts on the communities along the Project may occur mainly during the construction phase and are driven mainly due to the temporary deployment of Contractors workforce in the area where the Project will be implemented.

The main mitigation measures with regards to community health, safety and security issues foreseen in the various Management Plans are listed below:

- Avoid, minimize or change traffic density with impact on other road users and on the local community, in general (Transportation Management Plan, in particular the management of impacts using the new access road and public roads);
- Introduction of new staff as a guarantee of security in order to avoid conflicts, accidents or other forms of disturbance of public peace and healthy social local climate (Stakeholders Engagement Plan, in particular with regards to training and briefing the workers);

- Avoid, minimize or change the direct impact on activities of the local services providers (providers of water supply, electricity, etc.) and local entrepreneurs (Water Management Plan, particularly, as regards the protection of water sources);
- Prevent, avoid or minimize exposure of communities to diseases caused by noise, water and soil pollution (Pollution Prevention Plan);
- Improve / raise the response level of authorized institutions (police, hospitals, SMURD, etc.) to emergencies (Emergency Response Plan, specially in terms of responding to accidents and off-site incidents);
- Identify sensitive areas from, so that all necessary measures can be taken so as to avoid any elements of local discomfort or inconvenience and approach solutions early in order to limit socio-economic impact (Biodiversity Management Plan);
- Implement measures to reduce the impact on socio-economic environment even before the start of works (setting deviation routes, installation of sound-proofing panels, demarcation and installation of warning elements related to the area of the works, provision of alternative networks of utilities, etc.) (Labour and Working Conditions Management Plan );
- Although it is unlikely that a large portion of BRUA's work force will be employed from other countries , their strict adherence to the Worker's Code of Conduct that will be developed by Transgaz will aid in mitigating any unforeseen issues regarding community disturbance (Labour and Working Conditions Management Plan)
- Contractors will develop appropriate Emergency Response Plans for off-site activities in line with the Emergency Response Plan and Contractor Management Plan (Emergency Response Plan);
- Accidental leaks of fuel or oil will be quickly collected and removed with absorbant material, collected in closed and labeled containers - temporarily stored in specially designed spaces until their delivery to an operator authorized for the collection / disposal of oil waste (Emergency Response Plan);
- Perform simulations regarding the emergency situations in case an accidental pollution is caused, having impact on the water resources (Emergency Response Plan);
- Wastewater should be prevented from entering surface water bodies without prior assessment and treatment if necessary (Water Management Plan);
- Contractors will develop and implement an appropriate plan to prevent accidental water pollution based on the BRUA commitments requirements (Water Management Plan);
- Domestic wastewater to be separated from hazardous, oily water discharges at all sites (Water Management Plan);
- Contractors are required to prepare a Traffic Management Plans detailing the routes and mitigation measures for construction traffic, pipe and construction materials transportation.
- The tires of the transport means shall be cleaned at the exit from the working areas, in case of use of public roads (Roads and Traffic Management Plan);
- Access to the pipeline should be via existing tracks. Use of common corridors for both pipelines and roads in order to minimize area disturbance (Roads and Traffic Management Plan);
- Ensure workers' vehicles are parked in designated areas to minimise any disruption to local communities (Roads and Traffic Management Plan);

- Communicate transport route(s) and predicted schedule to communities where the transport route(s) run close to or through villages (Roads and Traffic Management Plan);
- A road safety and traffic awareness program will be implemented with local communities along heavily used transport routes (Roads and Traffic Management Plan);
- An Air quality monitoring program shall be implemented, especially close to the residential areas having the impact significance determined to be "high", in the surroundings of the GCS and site organizations areas (Pollution Prevention Plan);
- Store incompatible materials (acids, bases, flammables, oxidizers, reactive chemicals) in separate areas, and with containment facilities separating material storage areas. The storage and use of hazardous substances will be performed in conditions of maximum security, in order to avoid the possibility of their accidental spill (Hazardous Materials Management Plan);
- Record the number of complaints received from the community in relation to aspects regarding the management of hazardous substance (Hazardous Materials Management Plan);
- Investigate any complaints in relation to cultural heritage (desecration, disturbance, removal, trafficking of artefacts) and take appropriate action (Cultural Heritage Management Plan);
- Provide rapid response to any complaints from local communities in relation to inappropriate cultural behavior by personnel. Investigate and take appropriate action within the timeframe specified in Transgaz grievance procedure (Cultural Heritage Management Plan).
- In case of utility disruption (planned or unplanned) Contractor(s) will cooperate in an efficient manner with the utility provider (s) and local authorities and take all necessary measure to timely announce the community (whenever possible) and keep this disruption as short as possible.

Envisaged Performance Indicators and monitoring measures

ID	KPI	Target/Action Threshold	Monitoring Measure
KPI-CHSMP01	Number of non-compliances with community health safety&security measures as identified in envisaged measures to protect the local community during Project execution stage	Minimize and target zero per annum	See Appendix 1
KPI-CHSMP02	Number of recorded security incidents involving Project workers and member of local population	Minimise and continued improvement	See Appendix 1
KPI-CHSMP03	Reports issued by the local public health institutions	No significant increase of number of disease cases in the community	See Appendix 1
KPI-CHSMP04	Total number of grievances from local communities as reflected by grievances mechanism splited in received/responded on time/closed/open	Minimize grievances number	See Appendix 1
KPI-CHSMP05	Number of social incidents	Minimize and target zero per annum	

## 6.1 Envisaged measures to protect the local community during Project execution stage

Workers' living facilities have various ongoing impacts on adjacent communities. In order to manage these, the Contractors have to promote a thorough Community Relations Management Plan, in compliance with the socio-economic conditions of neighbouring settlements.

This plan will contain the processes to implement the findings of the preliminary community impact assessment and to identify, manage, mitigate or enhance ongoing impacts of the workers' accommodation on the surrounding communities.

Issues to be taken into consideration, according with Stakeholders Engagement Plan, Roads and Traffic Management Plan, Health and Safety Measures Plan, Community Health and Safety Management Plan and Emergency Respons Plan, include:

- community development – impact of workers’ camp on local employment, possibility of enhancing local employment and income generation through local sourcing of goods and services. Contractors should develop a Manpower study to identify the workforce needed during the project implementation period, the type and number of skilled, semi-skilled and unskilled labour force expected to be recruited in each stage of the project implementation period and the retrenchment period and conditions. Based on this study, and the results of the community needs, the contractors will try to maximize local employment.
- community needs – ways to identify and address community needs related to the arrival of specific infrastructures such as telecommunications, water sanitation, roads, health care, education, housing
- community health and safety – addressing and reducing the risk in the increase in communicable diseases, corruption, trade in illegal substances such as drugs, alcohol, petty crimes and other sorts of violence, road accidents
- community social and cultural cohesion – ways to mitigate the impact of the presence of large numbers of foreign workers, often males, with different cultural and religious background, ways to mitigate the possible shift in social, economic and political structures due to changes in access to income generation opportunities.
- Retrenchment conditions – contractors will have to clearly indicate the conditions of retrenchment from an early stage of the project. Due to its nature, the current project has a limited duration and thus there will be cases of collective retrenchment. The contractors will have to comply with all the provisions of Romanian labour legislation in respect to retrenchment and the international best practices and IFI requirements.
  - Comply with speed limits when transiting the villages by heavy traffic;
  - Accompany oversized transportations by specialised service providers;
  - Develop the Traffic Management Plan taking into account the sensitive areas (Natura 2000 protected natural areas, schools, hospitals, monuments, tourist destination areas);
  - Educational programmes / information campaigns for local communities (especially children) on health and safety risks associated with construction period
  - Educational programmes / trainings for workers on community health and safety aspects
  - Identify sensitive areas in each perimeter to be attacked during the construction phase, so that the necessary measures can be taken to avoid the emergence of elements of discomfort, local inconveniences and addressing early solutions to limit the socio-economic impact;
  - Implement measures to reduce the impact on socio-economic environment even before the start of works (setting deviation routes, installation of sound-deadening panels, demarcation and installation of Warning elements related to the area of the works, provision of alternative network of utilities, etc.);
  - Direct negotiation with the owners / land administrators to determine the amount of compensation or compensation after the damage to their respective lands;

- Establish work schedules and programs adapted to local elements, so as to eliminate overlapping with sensitive periods (local social projects, fairs, holidays, etc.). Compliance with work schedules, work rules and adjusting of working hours to weather-climate;
- Protection of the area around the work sites. The construction works must be marked and circled with a lane to demarcate the work area. Working corridors will be fenced as appropriate (see specific mitigation measures) to prevent intentional or unintentional intrusions, and signaling panels will be placed for protection purposes;
- Provide access to a communication mechanism for any stakeholder and local community, which should provide the possibility to express / officially record all concerns, complaints and grievances of individuals or society and to facilitate resolutions that should be mutually accepted by the parties. Throughout project execution the mechanisms to communicate grievances and complains by individuals and communities will remain active, and the procedures of recording and response will be adapted regularly, according to the local authorities necessity;
- Local communities will be informed and consulted on the Project and activities will be planned to include mitigation measures and stakeholder engagement activities.

## 7. APPENDIX 1: MITIGATION MEASURES & MANAGEMENT ACTIONS

Ref	Where	Action	OWNER(C/T)
328	Throughout	Prohibit all cutting of wood by workers.	C
341	all	Educate workforce on preventing bush fires. Ensure bush fires are not used as a land clearance method	C
172	Local Communities	Implement measures to reduce the impact on socio-economic environment even before the start of works (setting deviation routes, installation of sound-deadening panels, demarcation and installation of Warning elements related to the area of the works, provision of alternative network of utilities, etc.)	C
325	Throughout	Implement and enforce hunting and fishing ban on the workforce.(EXCEPT WHEN ALL LEGAL CONDITIONS ARE FULLFILLED).	C
208	Entire Project	Prohibiting weapons/ hunting for Project personnel, including subcontractors, both on site and while travelling to and from Project work areas	C
17	Throughout	Minimise exploitation and destruction of resources present and associated secondary impacts	C
281	Permanent change to cultural identity left behind due to work force influence	Continual reinforcement of the Worker's Code of Conduct for permanent staff, most specifically in areas influenced by staff of the 3 compressor stations	C
18	Access routes	Access to the pipeline should be via existing tracks Use common corridors for both pipelines and roads in order to minimize area disturbances	C
174	Local Communities	Establish work schedules and programs adapted to local elements, so as to eliminate overlapping with sensitive periods (local social projects, fairs, holidays, etc.). Compliance with work schedules, work rules and adjusting working hours to weather-climate	C
213	Entire Project	A Grievance Mechanism will be set up for communities and individuals to formally communicate their concerns, complaints and grievances to the company and facilitate resolutions that are mutually acceptable by the parties	T



214	Entire Project	Stakeholder Engagement Activities will continue throughout the project lifetime on a regular basis and procedures will be updated according to needs. Local authorities and local communities will be informed and consulted on project activities and planned mitigation measures during all phases of the Project and its related Stakeholder Engagement Activities;	T
171	Local Communities	Identifying sensitive areas from each work perimeter during the construction phase, so that the necessary measures can be taken to avoid the emergence of elements of discomfort, local inconveniences and addressing early solutions to limit the socio-economic impact	C
72	Throughout	Avoid working during the rest periods. If the constructor decides to work at night as well, it shall undertake the most adequate measures to reduce the impact following the use of lights and noise during the night	C
166	Throughout	Public access to cultural heritage sites (crosses, churches, cemeteries etc.) will be maintained at all times during the works.	T
168	Throughout	The additional archaeological field studies highlighted in the environmental permit will be completed before works commence. This will include further evaluation of potential sites of cultural heritage value along the route to ensure a more rigorous assessment of potential construction impacts. This will involve consultation with local consultants, archaeologists and the relevant authorities (including Ministry of Culture Representative Agencies at County level). Any further issues uncovered they will be incorporated into an updated version of the Cultural Heritage CESMP.	T
278,280	Permanent obstruction of access to cultural heritage sites due to psychological landscape changes	Transgaz will actively engage with local stakeholders to assess the potential for any material impacts on local cultural heritage (both physical and events). Any such impacts shall be appropriately mitigated and the approaches incorporated into the project ES-MS/CESMPs.	T
48	Throughout	The vehicle circulation speed shall be limited in correlation with the local factors. Vehicles will be driven at designated speed limits. Reduce the speed of the trucks and mega trucks when passing through localities	C
378		Dust emissions due to road travel shall be minimized by regulating vehicle speed and watering roads (where required).	C

286	Minimising access disruption	Ensure worker vehicles are parked in designated areas to minimise any disruption to local communities	C
532	Transport Route & Schedule	Communicate transport route(s) and predicted schedule to communities where the transport route(s) run close to or through villages.	C

## 8. APPENDIX 2: EU AND ROMANIAN LEGISLATION

The European and Romanian legislation:	
1	- G.D 856/2002 (Government Decisions) on waste management record keeping and the list of waste approval;
2	- G.D 1168/2013 amending and supplementing G.D. 788/2007 on establishing the measures for the implementation of European Parliament's and of the Council's (EC) Regulation no. 1013 / 2006 on shipments of waste;
3	- Decree no. 1281 /1121/2005 on establishing the rules for identifying containers for different types of materials for the purposes of selective collection;
4	- G.D 349/2005 (Government Decisions) on waste storage, as amended and supplemented; (Transposes Directive 1999/31/EC on the landfill of waste, published in the Official Journal of European Community (JOUE) no. L 182 of July 16th, 1999;
5	- G.D 235/2007 (Government Decision) on used oils management transposes Directive 75/439/CEE on disposal of waste oils, published in the Official Journal of European Community (JOCE) no. L 194/1975, amended by Directive 87/101/CEE, published in the Official Journal of European Community (JOCE) no. L 42/1987, on disposal of waste oils.
6	- G.D 1061/2008 (Government Decisions) on the transportation of hazardous and non-hazardous waste across Romanian territory;
7	- Law no. 211/15.11.2011 on waste conditions, republished in 2014, with further amendments and supplements (transposes Directive 2008/98/CE of the European Parliament and Council of November 19th, 2008 on waste and repealing certain directives, published in the Official Journal of UE (JOUE) series L no. 312 of November 22, 2008);
8	- Law no. 249/2015 on packaging and packaging waste management; (transposes the provisions of Directive 94/62/CE of the European Parliament and Council of December 20, 1994 on packaging and packaging waste, published in the Official Journal of European Community series L, no. 365 of December 31, 1994, amended by Directive 2004/12/CE of the European Parliament and Council of February 11, 2004, published in the Official Journal of UE , series L, no. 47 of February 18, 2004, by Directive

	<p>2013/2/UE of the European Commission, of February 7, 2013 on the amendment of Annex I to Directive 94/62/CE of the European Parliament and Council of on packaging and packaging waste, published in the Official Journal of UE series L, no. 37 of February 8, 2013, Decision 97/129/CE of the European Commission of January 28, 1997 establishing the identification system for packaging materials pursuant to European Parliament and Council Directive 94/62/CE on packaging and packaging waste, published in the Official Journal of European Community series L, no. 50 of February 20, 1997, Commission Decision 2005/270/CE of March 22, 2005 establishing the formats relating to the database system pursuant to Directive 94/62/EC on packaging and packaging waste [notified under number C (2005) 854, published in the Official Journal of UE series L, no. 86 of April 5, 2005];</p>
9	<ul style="list-style-type: none"> <li>- Law 360 of September 2<sup>nd</sup>, 2003 (*republished*) on the regime of hazardous chemical substances and preparations, as further amended and supplemented;</li> </ul>
10	<ul style="list-style-type: none"> <li>- Regulation (EC) No 1272/2008 of the European Parliament and of the Council of 16 December 2008 on classification, labelling and packaging of substances and mixtures, amending and repealing Directives 67/548/EEC and 1999/45/EC, and amending Regulation (EC) No. 1907/2006;</li> </ul>
11	<ul style="list-style-type: none"> <li>- Regulation (EC) No 1907/2006 of the European Parliament and of the Council of 18 December 2006 concerning the Registration, Evaluation, Authorization and Restriction of Chemicals (REACH), establishing a European Chemicals Agency, amending Directive 1999/45/EC and repealing Council Regulation (EEC) No. 793/93 and Commission Regulation (EC) No. 1488/94 as well as Council Directive 76/769/EEC and Commission Directives 91/155/EEC, 93/67/EEC, 93/105/EC and 2000/21/EC;</li> </ul>
12	<ul style="list-style-type: none"> <li>- Government Emergency Ordinance no. 195/2005 on environmental protection- published in O.J. no. 1196/30 Dec. 2005 with further amendments and supplements;</li> </ul>
13	<ul style="list-style-type: none"> <li>- Order no. 394/2008 of the Ministry of Transportation for the amendment and supplementation of the Norms regarding the organization and conduct of road transportation and related activities, approved by Order no. 1892/2006 of the Ministry of Transportation, Construction and Tourism - O.J. no. 262/3.04.2008;</li> </ul>
14	<ul style="list-style-type: none"> <li>- Law no. 167/2003 for the approval of the Government Ordinance no. 81/2000 on the certification of the classification of the registered road vehicles into the technical norms on road traffic safety, environmental protection and use according to destination, by regular technical inspections - O.J. 291/2003;</li> </ul>
15	<ul style="list-style-type: none"> <li>- Law no. 333/2007 for the amendment and supplementation of Law no. 31/1994 for the accession of Romania to the European Agreement regarding the international carriage of dangerous goods by road (A.D.R.), signed in Genoa 30.09.1957 – O.J. 37/17.01.2008.</li> </ul>

