

Pipeline Routing Details

The proposed pipeline route crosses 3 counties and 42 administrative units as shown in **Figure 1** below.

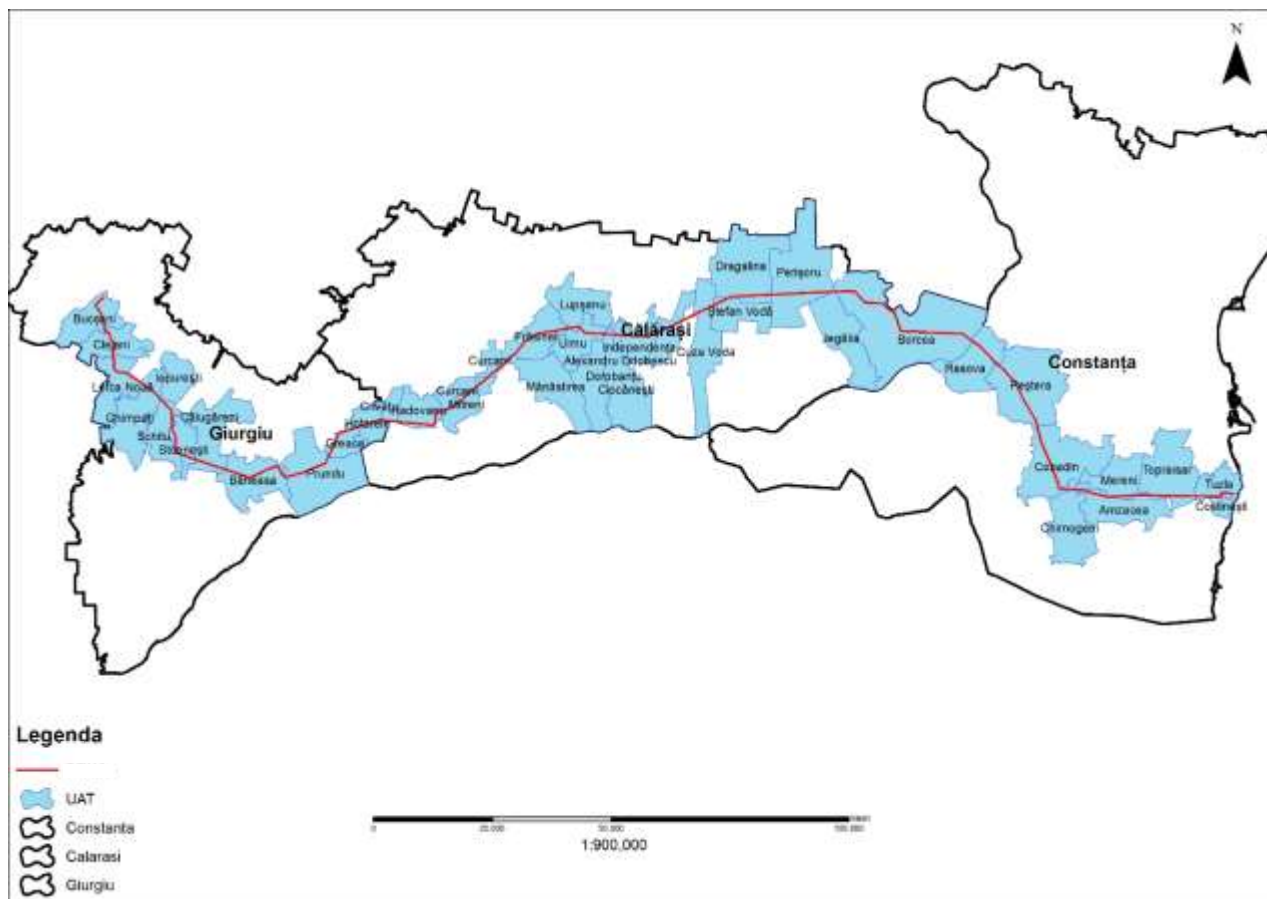


Figure 1 - Counties and Administrative-Territorial Units (ATU) Intersected by the Proposed Pipeline Route

A summary presentation of the main elements composing the project per administrative – territorial units is presented synthetically in the table below.

Table 1 - The main components of the SPP included in the ATU (Administrative Territorial Unit)

County	ATU	Objective
Constanța	Tuzla	Gas transmission pipeline route: 1556 m x 16 m + 6134m x 24 m + 1 valve station within the gas takeover point
	Costinești	Gas transmission pipeline route: 1000 m x 24 m
	Topraisar	Gas transmission pipeline route: 10006 m x 24 m
	Amzacea	Gas transmission pipeline route: 10945 m x 24 m + 1477m x 22 m + 596m x 16m + 220 sq.m. (valve station) + 2000 sq.m. (pig launching – receipt station)

	Mereni	Gas transmission pipeline route 2225 m x 24 m + 160 m x 16 m
	Chirnogeni	Gas transmission pipeline route:1610 m x 22 m
	Cobadin	Gas transmission pipeline route: 15695 m x 22 m + 1500 sq.m. (interconnection with T1) +15000 sq.m. (site management and pipe storage facility)
	Peștera	Gas transmission pipeline route: 16604 m x 22 m + 4000mp (pipe storage facility)
	Rasova	Gas transmission pipeline route: 6947 m x 22 m + 432 sq.m. (valve station)
Călărași	Borcea	Gas transmission pipeline route: 33546 m x 22 m + 1000 sq.m. (valve stations)
	Jegălia	Gas transmission pipeline route: 757 m x 22 m
	Perișoru	Gas transmission pipeline route: 12871 m x 22 m
	Dragalina	Gas transmission pipeline route: 9087 m x 22 m + 4000 sq.m. (pipe storage facility)
	Ștefan Vodă	Gas transmission pipeline route: 3368 m x 22 m + 1000 sq.m. (valve stations)
	Cuza Vodă	Gas transmission pipeline route: 4949 m x 22 m
	Grădiștea	Gas transmission pipeline route: 2396 m x 22 m
	Independența	Gas transmission pipeline route: 5450 m x 22 m
	Alexandru Odobescu	Gas transmission pipeline route: 7887 m x 22 m + 15000 sq.m. (site management and pipe storage facility)
	Ciocănești	Gas transmission pipeline route: 1887 m x 22 m
	Dorobanțu	Gas transmission pipeline route: 2312 m x 22 m
	Ulmu	Gas transmission pipeline route: 6119 m x 22 m + 500 sq.m. (valve station)
	Lupșanu	Gas transmission pipeline route: 2311 m x 22 m
	Mănăstirea	Gas transmission pipeline route: 3277 m x 22 m
	Frăsinet	Gas transmission pipeline route: 13844 m x 22 m + 4000 sq.m. (pipe storage facility)
	Curcani	Gas transmission pipeline route: 5924 m x 22 m
	Mitreni	Gas transmission pipeline route: 9596 m x 22 m + 700 sq.m. (valve stations)
	Radovanu	Gas transmission pipeline route: 11445 m x 22 m
	Crivăț	Gas transmission pipeline route: 2464 m x 22 m
	Giurgiu	Hotarele
Greaca		Gas transmission pipeline route: 6186 m x 22 m

	Isvoarele	Gas transmission pipeline route: 1139 m x 22 m + 350 sq.m. (valve station) +4000 sq.m. (pipe storage facility)
	Prundu	Gas transmission pipeline route: 11553 m x 22 m
	Băneasa	Gas transmission pipeline route: 13710 m x 22 m + 600 sq.m. (valve station) + 15000 sq.m. (Site management and pipe storage facility)
	Călugăreni	Gas transmission pipeline route: 6653 m x 22 m
	Stoenești	Gas transmission pipeline route: 10425 m x 22 m + 1000 sq.m. (interconnection Vlasin) + 825 m x 16m (pipeline Dn 500 connection with pipeline Dn500 Podisor-Giurgiu) + 4000 sq.m. (pipe storage facility)
	Schitu	Gas transmission pipeline route: 6063 m x 22 m
	Iepurești	Gas transmission pipeline route: 461 m x 22 m
	Ghimpați	Gas transmission pipeline route: 5565 m x 22 m
	Bulbucata	Gas transmission pipeline route: 678 m x 22 m
	Letca Nouă	Gas transmission pipeline route: 7124 m x 22 m
	Clejani	Gas transmission pipeline route: 6.744 m x 22 m + 350 sq.m. (valve station)
	Bucșani	Gas transmission pipeline route: 8735 m x 22 m + 600 sq.m. (valve station) + 1 valve station within GCS Podișor