

Installation of Aladdin eToken PKI Client

Version 4.55

For details regarding installation please consult the CD documentation:

eToken_PKI_Client_4_5_Reference_Guide.pdf

There are two versions of the PKIClient application on the CD for the 32 bit and for the 64 bit operation systems.

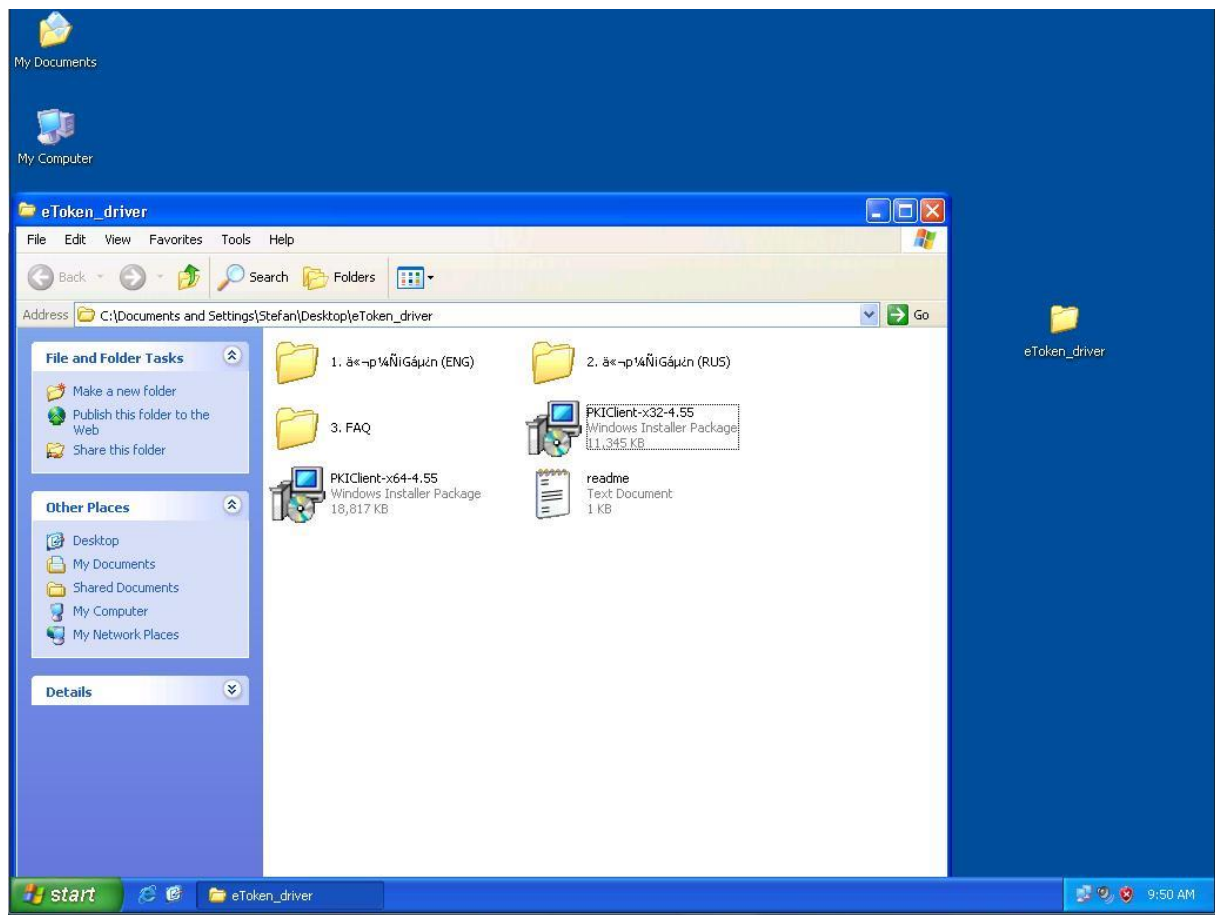
The following operation systems are supported:

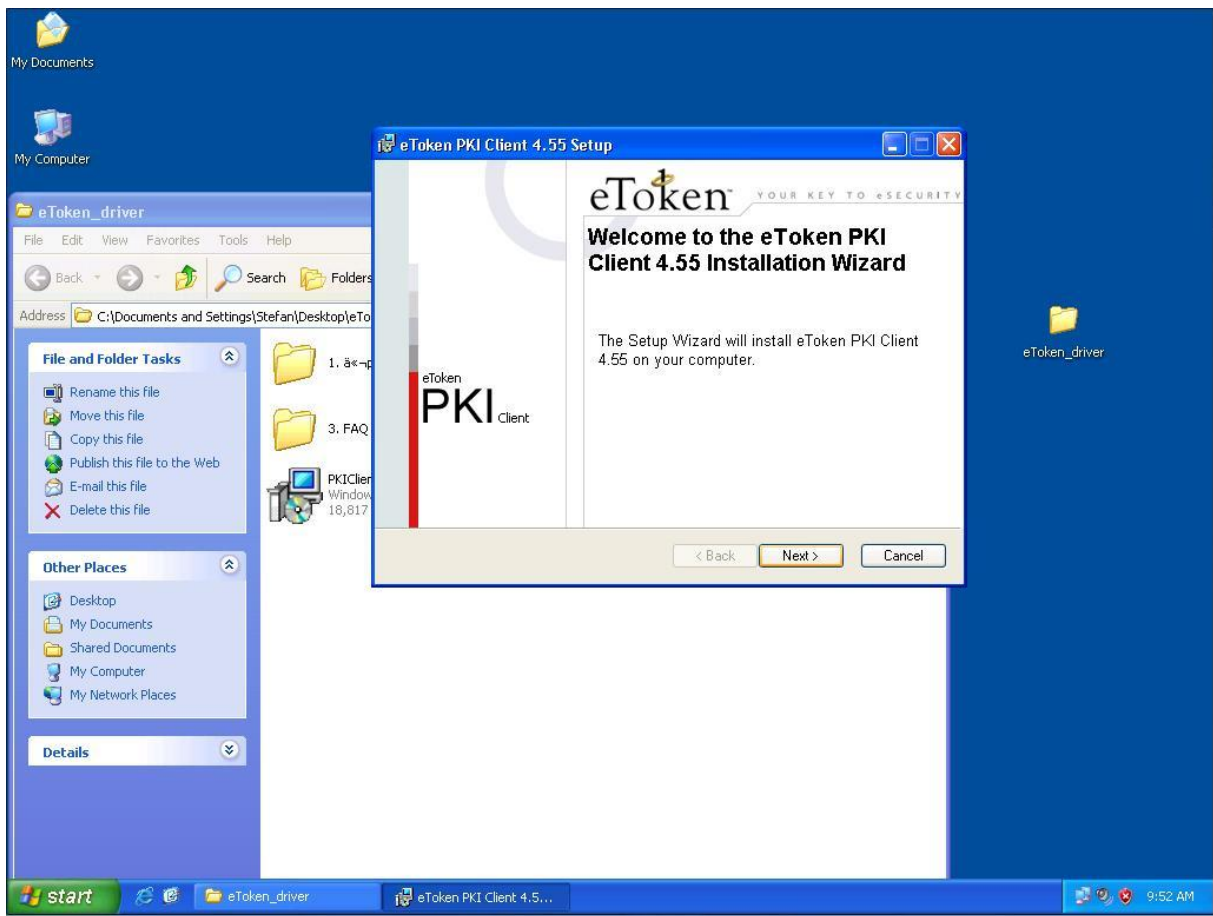
Windows Server 2003®

Windows XP® 32-bit and 64-bit with SP2/SP3

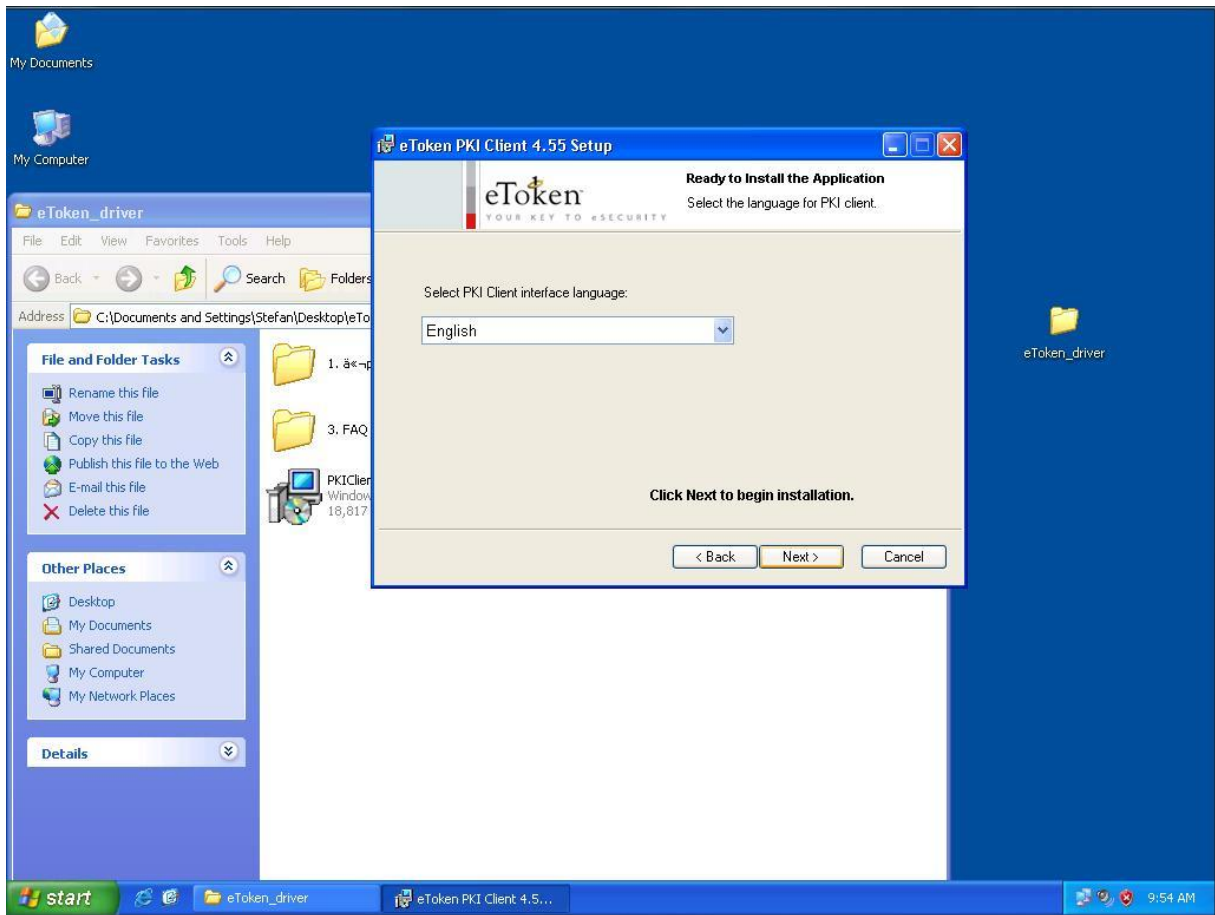
Windows Vista™ 32-bit and 64-bit

The following driver is installed:

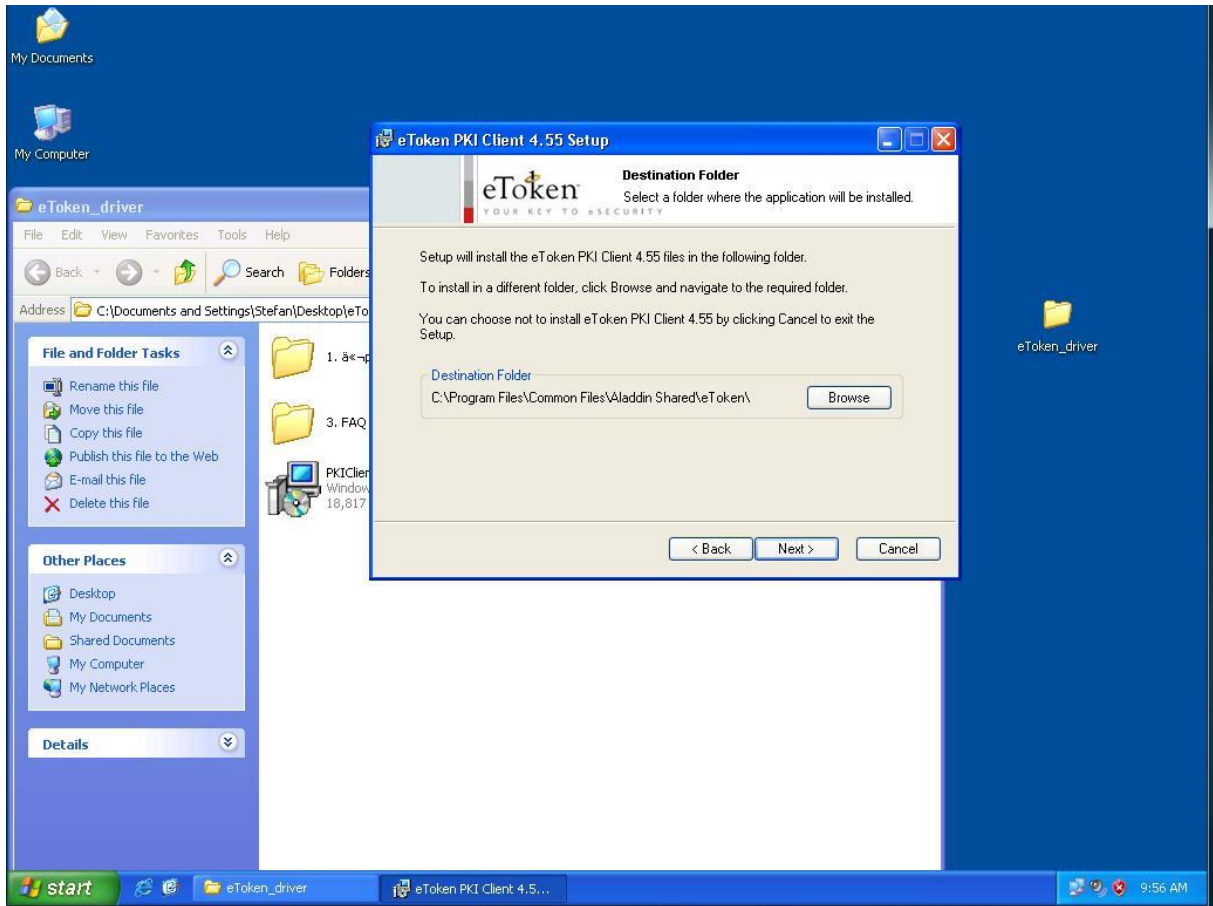




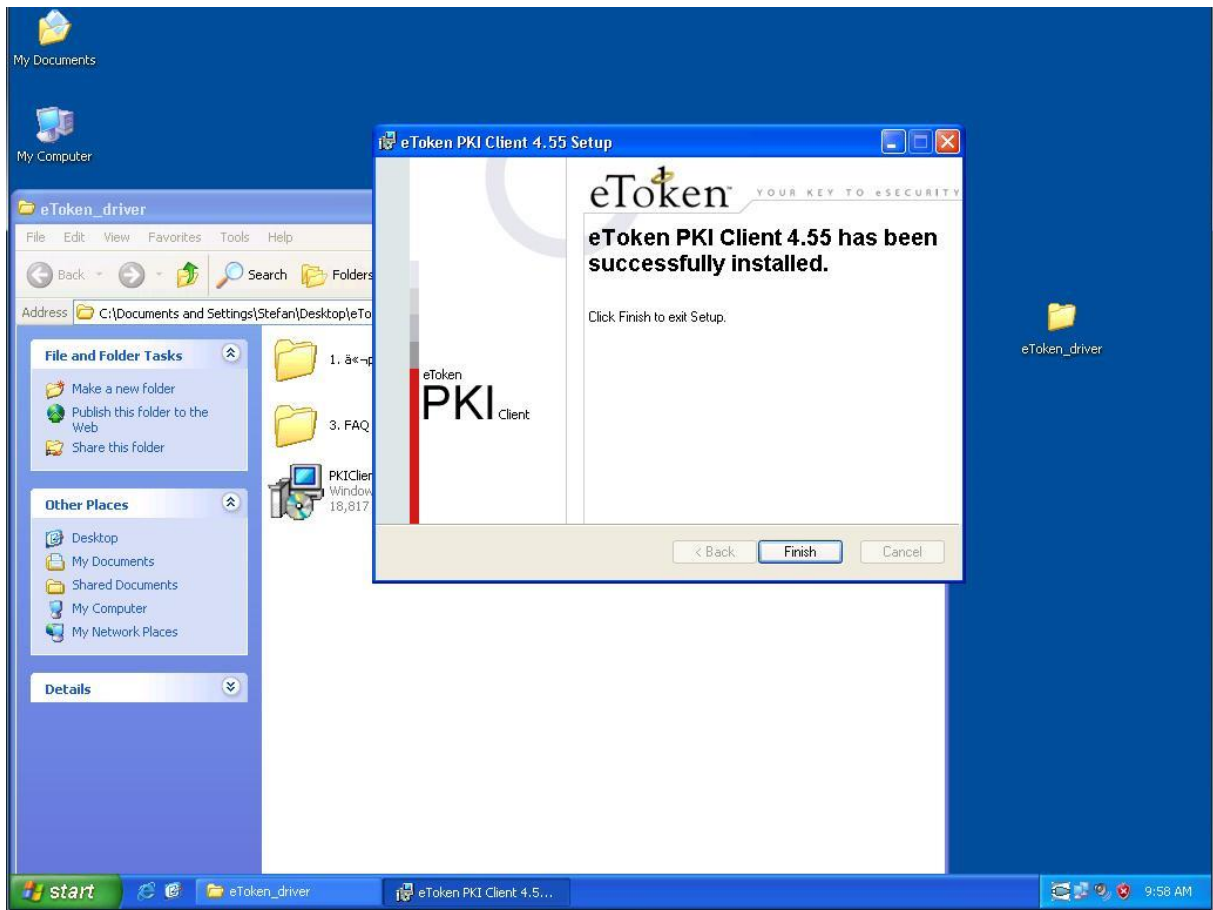
Click on Next.



Click on Next.



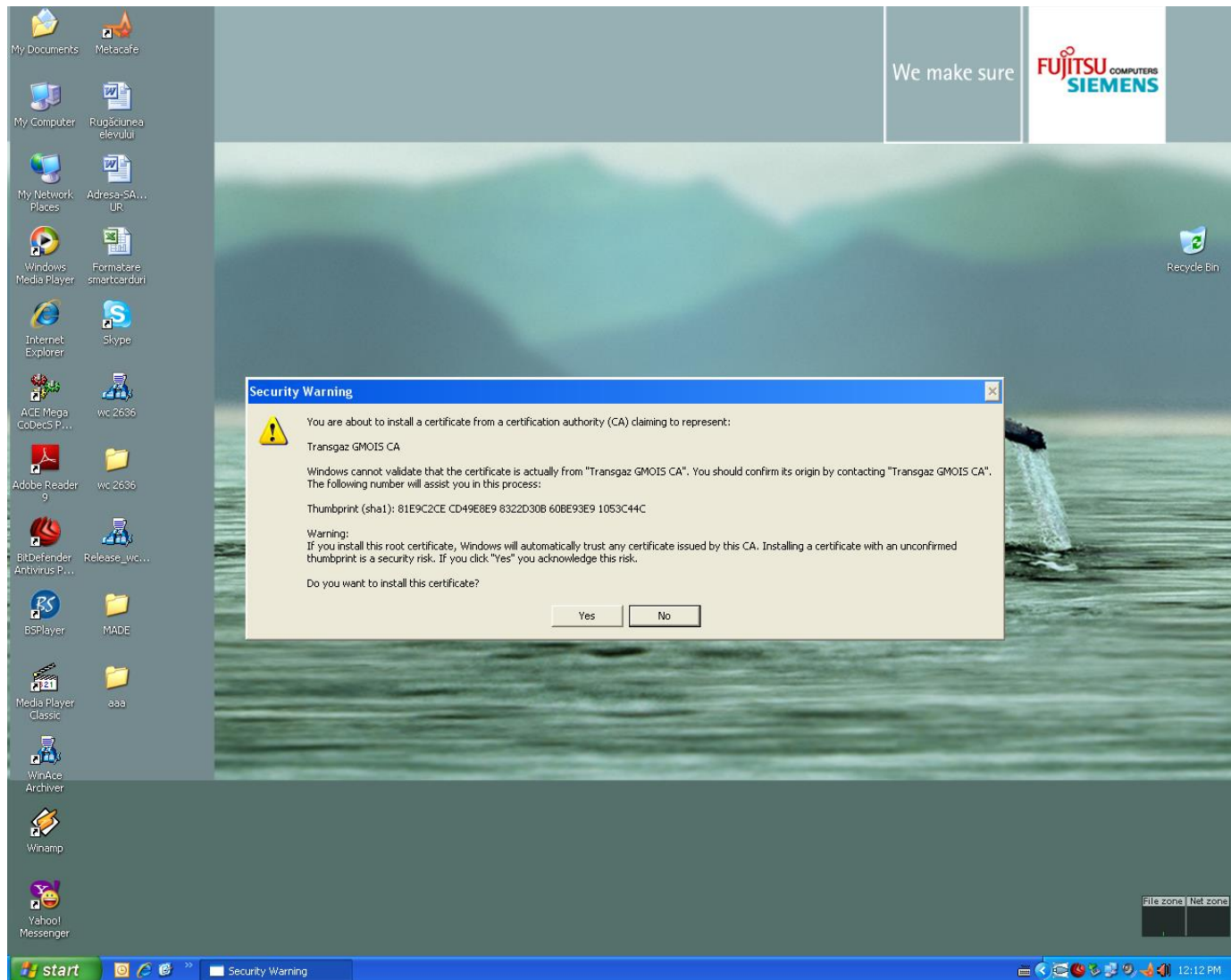
Click on Next.



Click on Finish.

The system is restarted.

After the restart insert the etoken in the unit and choose YES.



The etoken is installed. You may now access the TRANSGAZ GMOIS portal at:

<https://ecom.transgaz.ro/irj/portal>